

The image features a laboratory setting with a scientist in the foreground wearing a white lab coat and safety glasses, working with equipment. The background is slightly blurred, showing another person and laboratory equipment. The overall color palette is muted, with a teal overlay. The Levitas Bio logo is positioned in the top left corner.

**LEVITAS** BIO<sup>®</sup>

# LeviSelect Complete Mouse Myelin Depletion Kit (Early Access)

Customer Facing Deck

# LeviSelect™ Complete Mouse Myelin Depletion Kit



Available for early access



Combines best of cold tissue dissociation + myelin removal



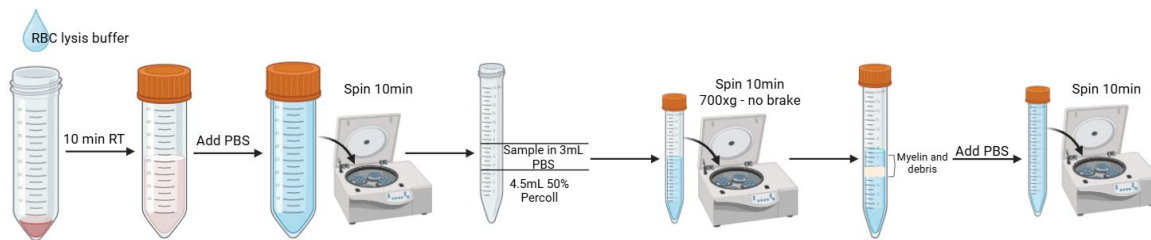
Streamlined workflow w/RBC depletion included



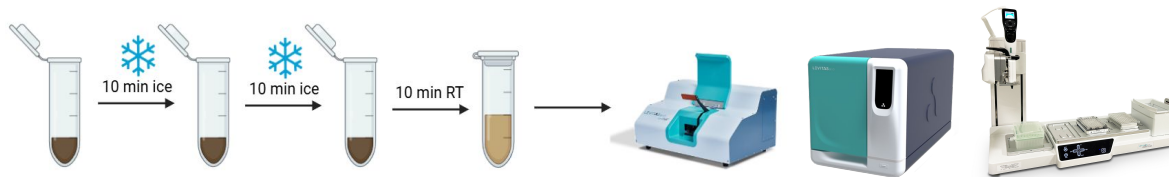
Optimized for low input tissue (up to 25 mg)

# Why it's Time for a New Standard in Brain Tissue Processing

Traditional  
density gradient  
(Percoll method)



LeviSelect



Our  
Advantage

- ✓ Fewer steps
- ✓ >2x higher yields
- ✓ Scalable processing
- ✓ Gentle to cells
- ✓ Low inputs needed

# Complete Mouse Myelin Depletion Kit at-a-Glance (10 rxn kit)



## Convenient multi-functional kit

Tissue dissociation | Myelin depletion  
RBC depletion



## Process 10 x 25mg samples

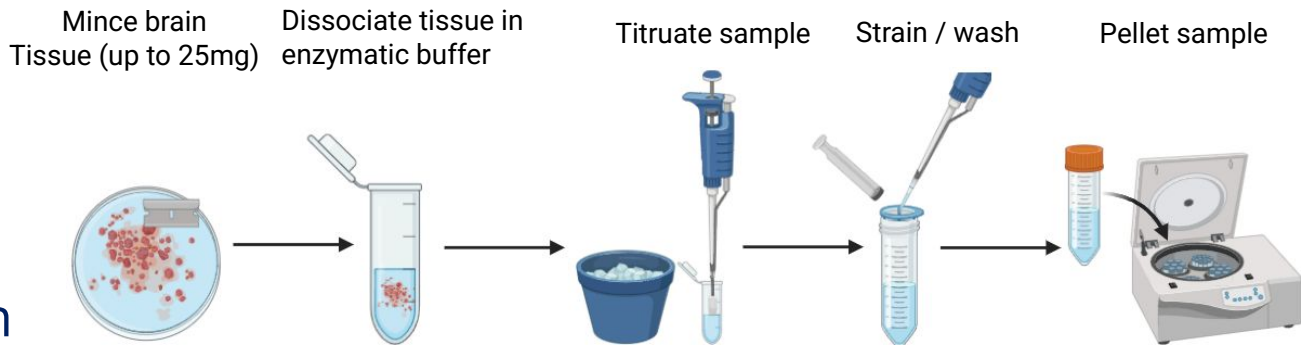


## Perfect for limited samples

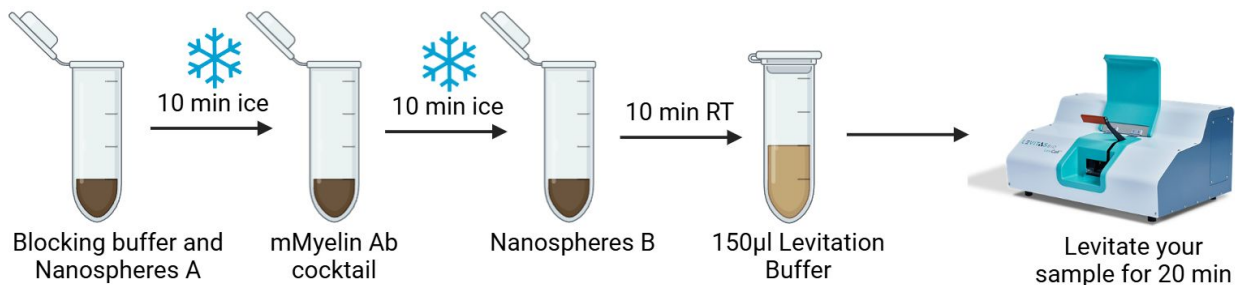
Component	Quantity	Storage Conditions	Prep for use
Enzyme B	1 x 25 mg	Store at 2-8°C. Do not freeze	Maintain on ice
Enzyme C	1 x 25 mg	Store at 2-8°C. Once resuspended, store at -20°C.	Maintain on ice
Blocking Buffer, tube	1 x 10 µL	Store at 2-8°C. Do not freeze	Maintain on ice
Mouse Myelin Nanospheres A, Tube	1 x 250 µL	Store at 2-8°C. Do not freeze	Maintain on ice
Mouse Myelin Ab Cocktail, tube	1 x 100 µL	Store at 2-8°C. Do not freeze	Maintain on ice
Mouse Myelin Nanospheres B, Tube	1 x 100 µL	Store at 2-8°C. Do not freeze	Maintain on ice
5X LeviSelect Buffer, Tube	2 x 1.8 mL	Store at 2-8°C. Do not freeze	Maintain at RT

# Simple 2-Step Workflow for Maximal Results

## Step 1: Tissue Dissociation



## Step 2: Myelin / RBC depletion



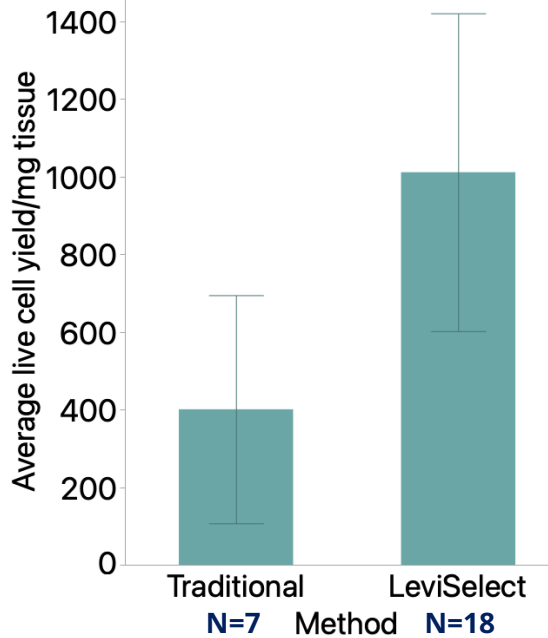
✓ Proven workflows

✓ 30 min HoT

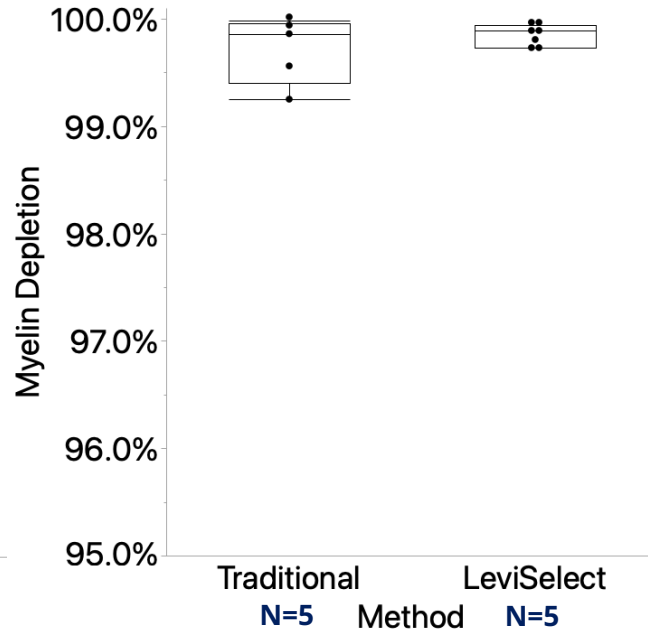
✓ 2 hrs total time

# Maximizing Outcomes From Samples

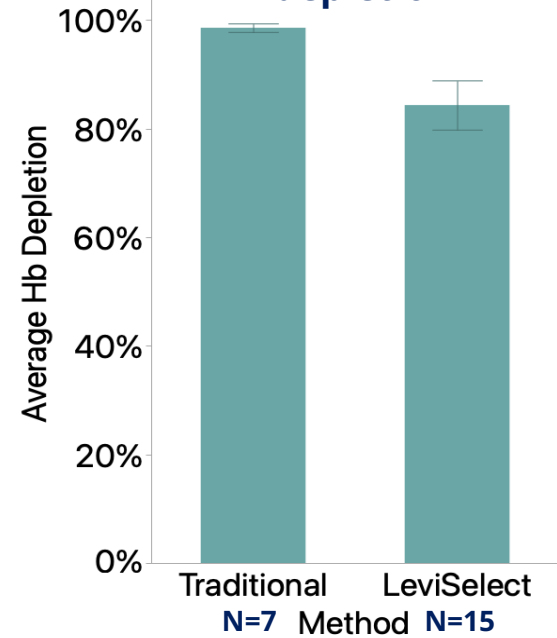
>2x Cell Yields



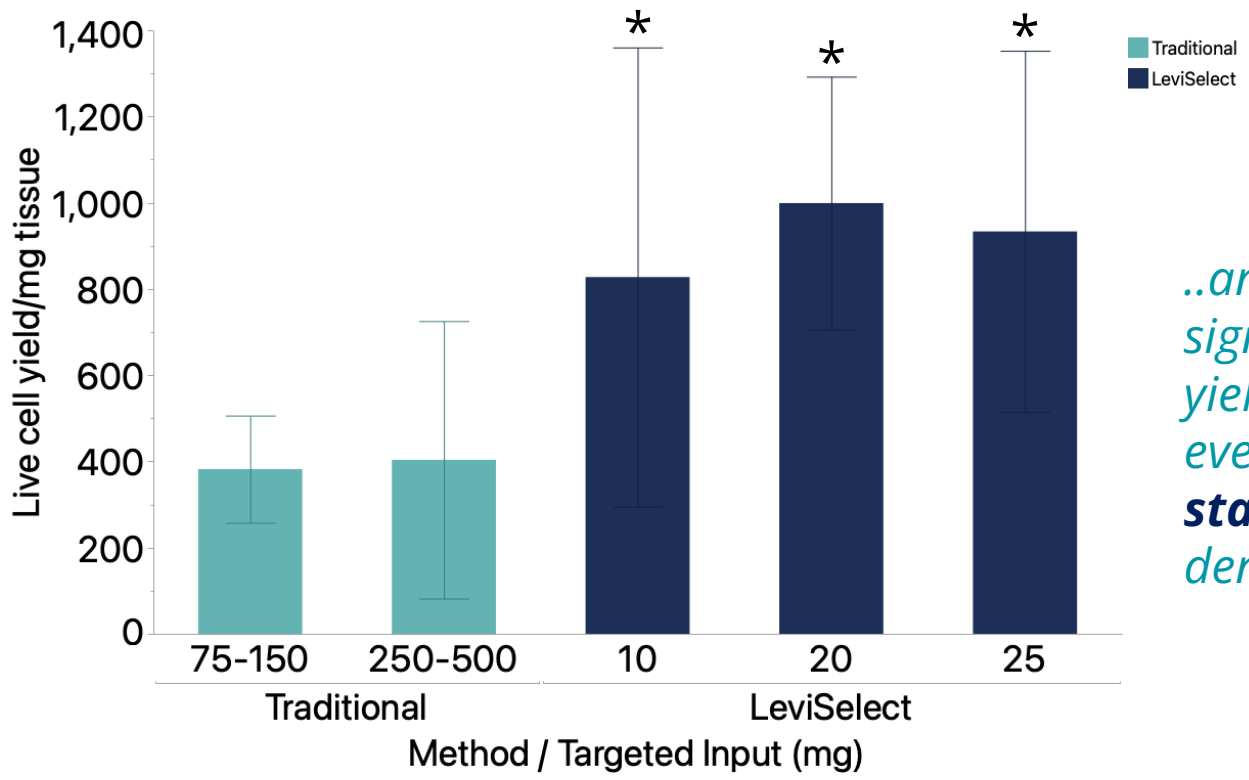
= Myelin Depletion



"No Stress" RBC depletion



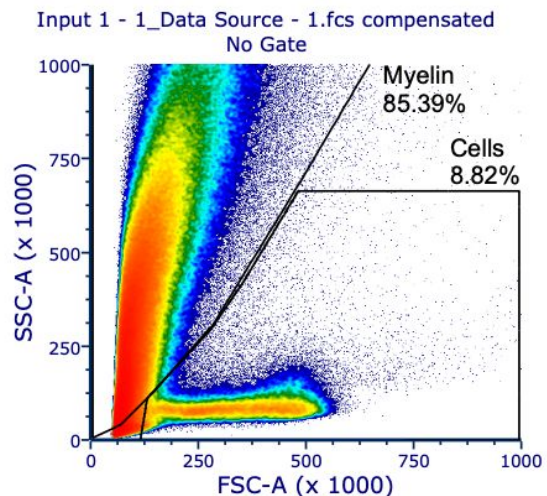
# Delivers Consistent Yields at Recommended Input Ranges



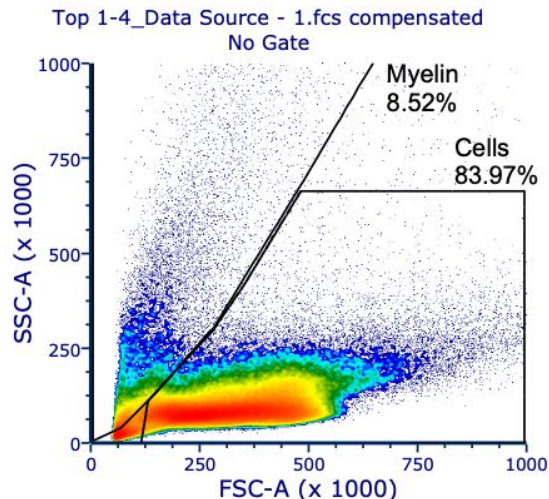
*..and delivers significantly higher yields of viable cells even at **50x less starting input as density gradient!***

# Get Cleaner Preps and More Viable Cells

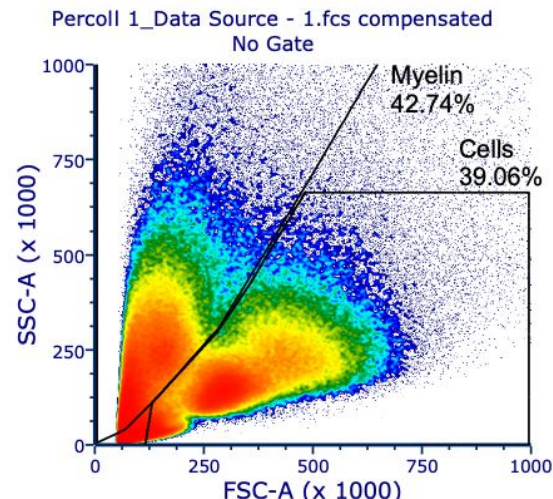
## Input



## LeviSelect



## Traditional Method



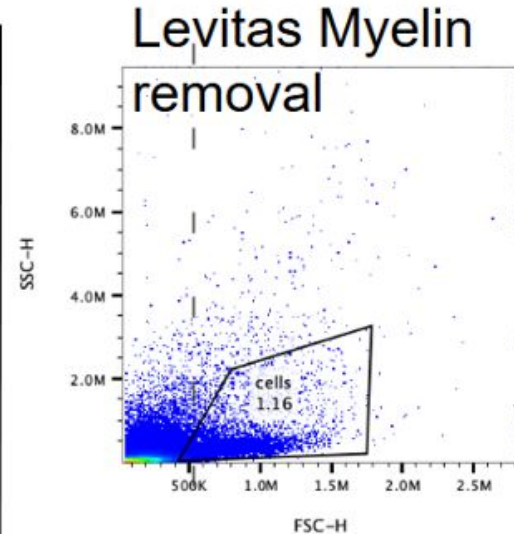
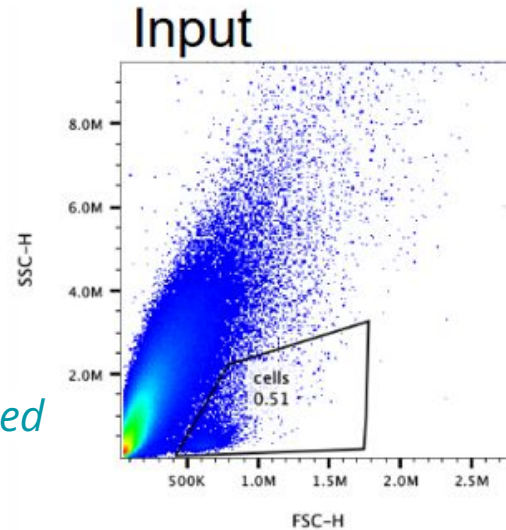
# Kit Demonstrates Significant Myelin Depletion in Customer Hands

**Sample type:** Perfused mouse hippocampus (10mg input)

**Yields | Viability after LeviSelect:**  
2,000 cells/mg | 98%

## Customer comments:

*"We are **pretty happy** with the myelin removal and clean up and are very interested in pursuing a strategy to enrich our target cells while cleaning up the prep."*



# Ordering info

Part Number	Description
1004120	LeviSelect Complete Mouse Myelin Depletion Kit (10 rxn)



# Thank You.

[www.levitasbio.com](http://www.levitasbio.com)

For Research Use Only. Not for use in diagnostic procedures. ©2025 LevitasBio, Inc. All rights reserved.

LeviCell, LeviPrep, LeviSelect, LevitasBio and the LevitasBio logo are the property of LevitasBio, Inc. All other trademarks are the property of their respective owners.